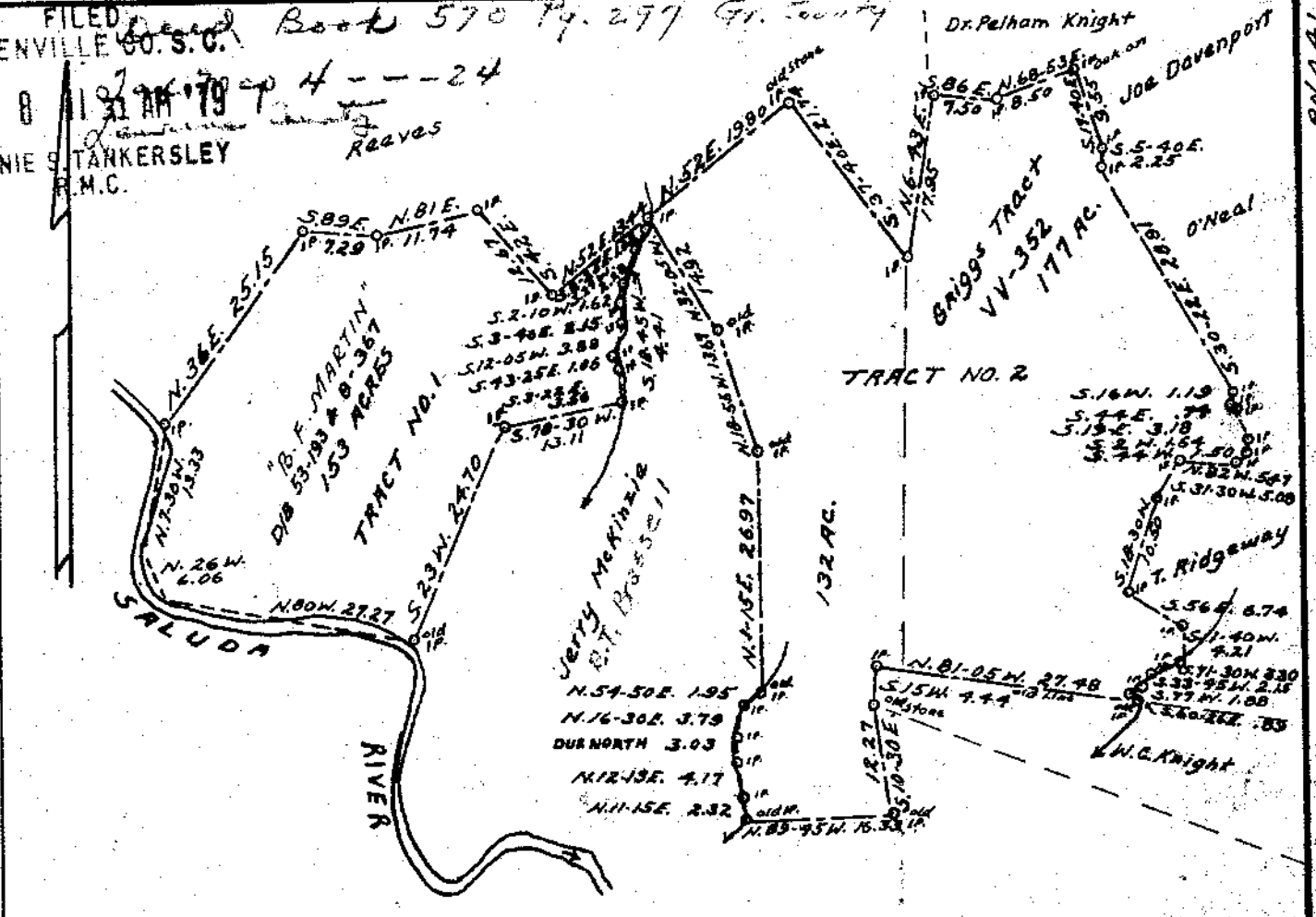
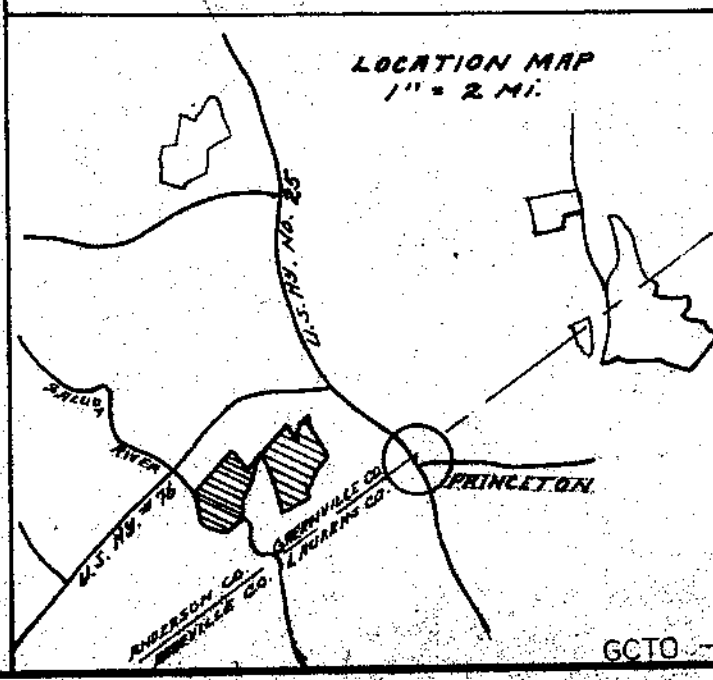


Bearing	Feet	Chains	
TRACT NO. 1			
N.36E.	1660	25.15	IP East Bank SALUDA RIVER
S.89E.	481	7.29	Along to Reeves Line
N.81E.	775	11.74	
S.42E.	835	12.67	Total length 2194'
N.52E.	887	13.44	To IP Bank Branch
S.8-25E.	67	1.02	Down Branch
S.27W.	151	2.29	Jarry McConaha Line
S.18-45W.	291	4.41	
S.2-10W.	107	1.62	
S.3-40E.	142	2.15	
S.12-05W.	257	3.89	
S.43-25E.	70	1.06	
S.3-22E.	235	3.56	
S.78-30W.	865	13.11	IP Leaving Branch
S.23W.	1630	24.70	To IP Bank Saluda River
N.80W.	1800	27.27	UP River Aero Photo
N.26W.	400	6.06	
N.7-30W.	880	13.33	To Beginning
TRACT NO. 2			
N.52E.	1307	19.80	Cor Tract No. 1 IP on Branch - length of line 2194'
S.37-40E.	1435	21.74	old Stone to IP
N.6-43E.	1185	17.95	IP Reeves line
S.86E.	495	7.50	IP Dr. Pelham Knight
N.68-53E.	561	8.50	To oak on
S.17-40E.	630	9.55	IP Joe Davenport Line
S.5-40E.	148.5	2.25	IP
S.30-22E.	1908	28.91	IP O'Neal Line
S.16 W.	78.5	1.19	
S.44E.	49	.74	
S.19E.	211	3.18	
S.2W.	108	1.64	
S.44W.	99	1.50	
N.82W.	361	5.47	IP T. Ridgeway Line
S.31-30W.	336	5.09	
S.18-30W.	693	10.50	
S.56E.	445	6.74	
S.1-40W.	278	4.21	IP on Branch
S.71-30W.	278	3.30	Down Branch
S.33-45W.	142	2.15	
S.77W.	124	1.88	
S.10-26E.	59	.89	old IP on Branch
S.81-05W.	1814	27.48	IP W.C. Knight old line
S.10-05E.	293	4.44	To old Stone
S.10-05E.	810	12.27	To old I.P.
S.83-45W.	1078	16.33	To old IP Fork of Branch
N.11-15E.	153	2.32	up branch.
N.12-15E.	275	4.17	"
DUE NORTH	200	3.03	"
N.16-30E.	250	3.79	"
N.54-50E.	129	1.95	to old I.P.
N.1-15E.	1780	26.97	to old I.P.
N.18-55W.	902	13.67	to old I.P.
N.32-05W.	985	14.92	To Beginning



Laurens County Tax Assessor.
 Claims 29.50 Ac.



Recertified 5-2-1979
 Catawba Newsprint Co. No. 2355
 J. T. Killian
 NOT RECORDED
7A-100
 TRACT OF LAND OWNED BY
W. C. KNIGHT
 CONTAINING 462 ACRES
 NEAR
PRINCETON
 GREENVILLE CO. - S.C.
 TO BE DEEDED TO
W. V. PULP & PAPER CO.
 SCALE 1" = 20 CH. DEC. 30, 1956
 W. H. HILLIS - ENGINEER
 SPARTANBURG, S.C.
 GCTO 20-32 JUN. 8 79
 PH 441
 1.000

2355 A-1